

Henry Moore. Impuls für Europa

11. November 2016 bis 19. März 2017

Pressefotos

Die kostenfreie Veröffentlichung der Pressebilder gilt ausschließlich für die aktuelle Berichterstattung über die Ausstellung (11. August 2016 bis 30. April 2017) und nur unter der vollständigen Angabe der Bildnachweise. Die Kunstwerke dürfen nur vollständig und unverändert abgebildet werden.

Kontakt

Anja Tomasoni
Stv. Pressesprecherin

T +49 (0) 251 5907 168
anja.tomasoni@lwl.org

LWL-Museum für Kunst und Kultur
Domplatz 10
48143 Münster

www.lwl-museum-kunst-kultur.de



1
Henry Moore, Draped Seated Woman, 1957/58. © The Henry Moore Foundation. Leihgabe des Kunst- und Museumsverein Wuppertal. Temporär aufgestellt am LWL-Museum für Kunst und Kultur. Foto: LWL/Hanna Neander



2
Henry Moore, Three Way Piece No. 2: (The) Archer, 1964/65. © The Henry Moore Foundation. Leihgabe der Nationalgalerie, Staatliche Museen zu Berlin. Temporär aufgestellt am LWL-Museum für Kunst und Kultur Foto: LWL/ Hanna Neander



7
Henry Moore, Helmet Head and Shoulders, 1952. Tate: Presented by the artist 1978. © Reproduced by permission of The Henry Moore Foundation. Foto: © Tate, London 2016



8
Henry Moore, Three Points, 1939 – 40, cast before 1949. Tate: Presented by the artist 1978 © Reproduced by permission of The Henry Moore Foundation. Foto: © Tate, London 2016



3
Henry Moore, Three Piece Sculpture: Vertebrae, 1968/69. Münster, LBS Westdeutsche Landesbausparkasse. Foto: LWL/Hanna Neander



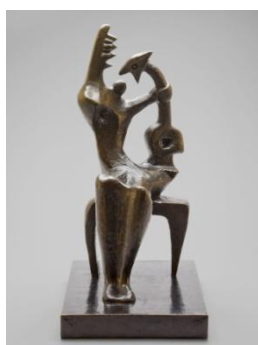
4
Dr. Tanja Pirsig-Marshall und Sigg Spiegelburg-Hölker vor Henry Moore, Two Piece Reclining Figure No. 5, 1963/64. © The Henry Moore Foundation. Leihgabe der Kunsthalle Recklinghausen. Temporär aufgestellt am LWL-Museum für Kunst und Kultur. Foto: LWL/ Hanna Neander



9
Henry Moore, Three Piece Reclining Figure No. 2: Bridge Prop, 1963. Tate: Presented by the artist 1978 © Reproduced by permission of The Henry Moore Foundation. Foto: © Tate, London 2016



10
Henry Moore, Two Piece Reclining Figure No. 9, 1968. Tate: Presented by the artist 1978 © Reproduced by permission of The Henry Moore Foundation. Foto: © Tate, London 2016



5
Henry Moore, Mother and Child, 1953. Tate: Presented by the Friends of the Tate Gallery 1960 © Reproduced by permission of The Henry Moore Foundation. Foto: © Tate, London 2016



6
Henry Moore, Working Model for Three Way Piece No. 1: Points, 1964. Tate: Presented by the artist 1978 © Reproduced by permission of The Henry Moore Foundation. Foto: © Tate, London 2016



11
Henry Moore, Two Reclining Figures, 1980. LWL-Museum für Kunst und Kultur, Münster © Reproduced by permission of The Henry Moore Foundation. Foto: LWL/Sabine Ahlbrand-Dornseif



12
Henry Moore, Tube Shelter Perspective, 1941. Tate: Presented by the War Artists Advisory Committee 1946 © Reproduced by permission of The Henry Moore Foundation. Foto: © Tate, London 2016



17
Henry Moore, Five Ideas for Sculpture, 1981. Tate: Presented by the Henry Moore Foundation 1982 © Reproduced by permission of The Henry Moore Foundation. Foto: © Tate, London 2016



18
Henry Moore vor seiner Plastik "Working Model for Stone Memorial, 1976. Foto: Dietmar Halemba



13
Henry Moore, Three Sculpture Motives, 1970-3. Tate: Presented by the artist 1975 © Reproduced by permission of The Henry Moore Foundation. Foto: © Tate, London 2016



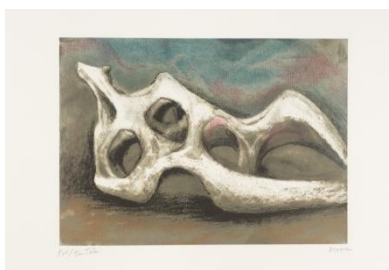
14
Henry Moore, Six Sculptural Motives, 1970. Tate: Presented by the artist 1975 © Reproduced by permission of The Henry Moore Foundation. Foto: © Tate, London 2016



19
Kuratorin Dr. Tanja Pirsig-Marshall. Foto: LWL/Hanna Neander



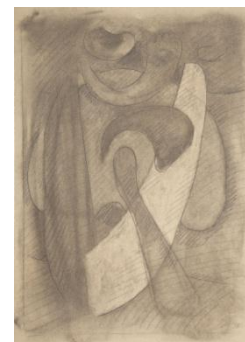
20
Hans Arp, Ruhende 1960. Stiftung Arp e. V., Berlin/Rolandswerth © VG Bild-Kunst, Bonn 2016. Foto: © Stiftung Arp e. V., Berlin/Rolandswerth, Wolfgang Morell



15
Henry Moore, Reclining Figure: Bone, 1982, published 1984. Tate: Presented by the Henry Moore Foundation 1986 © Reproduced by permission of The Henry Moore Foundation. Foto: © Tate, London 2016



16
Henry Moore, Sculptural Objects, 1949, Lithograph on paper. Tate: Presented by Patrick Seale Prints 1975 © Reproduced by permission of The Henry Moore Foundation. Foto: © Tate, London 2016



21
Willi Baumeister, Figur malerisch, 1936. Archiv Baumeister im Kunstmuseum Stuttgart © VG Bild-Kunst, Bonn 2016. Foto: © Kunstmuseum Stuttgart



22
Michael Croissant, Kopf und Schultern, 1976. Lehmbruck Museum, Duisburg © VG Bild-Kunst, Bonn 2016. Foto: © Jürgen Diemer



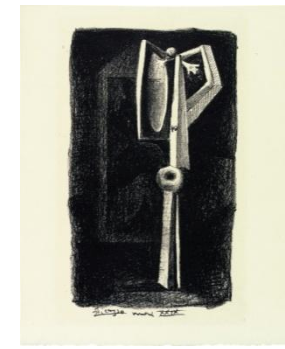
23
 Alberto Giacometti, Tête qui regarde,
 1929. Collection Fondation Giacometti,
 Paris
 © Succession Alberto Giacometti
 (Fondation Giacometti + ADAGP, Paris)
 2016. Foto: © Fondation Giacometti
 (Fondation Alberto et Annette Giacometti
 + ADAGP)



24
 Karl Hartung, Durchlöcherte Form
 (Abstrakte Form), 1935. Estate of Karl
 Hartung © VG Bild-Kunst, Bonn 2016.
 Foto: LWL/Hanna Neander



27
 Markus Lüpertz, Der Krieger, 1993. Collection
 Ströher, Darmstadt. © VG Bild-Kunst, Bonn
 2016. Foto: © Kunstmuseum Bonn, Reni
 Hansen



28
 Pablo Picasso, Figure (Baigneuse à la Cabine),
 1929. Kunstmuseum Pablo Picasso, Münster
 Gauss/Reuße 30|XXVI © Succession Picasso /
 VG Bild-Kunst, Bonn 2016. Foto: ©
 Kunstmuseum Pablo Picasso, Münster



25
 Bernhard Heiliger, Kleine Liegende I,
 1948. Galerie Magnus P. Gerdson,
 Hamburg © VG Bild-Kunst, Bonn 2016.
 Foto: © Nicolai Stephan, Lüneberg



26
 Barbara Hepworth, Maquette for Winged
 Figure, 1957. British Council Collection
 Works by Hepworth © Bowness. Foto: ©
 British Council Collection



29
 Hans Uhlmann, Akkord, 1948. Lehmbruck
 Museum, Duisburg, permanent loan from
 the Friends © VG Bild-Kunst, Bonn 2016.
 Foto : © Octavian Beldiman

Folgende Objekte dürfen nicht (auch teil- oder anschnittweise) fotografiert und gefilmt werden:

Raum 1
 Joseph Beuys, Bergkönig (Tunnel) 2 Planeten
 Joseph Beuys, Plastik von Moore von Beuys

Raum 3
 Alberto Giacometti, Gazing Head

Raum 4
 Pablo Picasso, Figure (Baigneuse à la Cabine)
 Willi Baumeister, Figuren afrikanisch

Raum 5
 Willi Baumeister, Figur malerisch

Raum 6
 Norbert Kricke, Raumplastik Weiß